

HEAVY DUTY SERIES

CLASSIC STEEL BARRICADE

Our classic steel barricade has been the industry quality standard for crowd control for over 40 years

USED BY EXPERTS



Strong, reliant, and durable enough to control large crowds

PERFECTLY CRAFTED



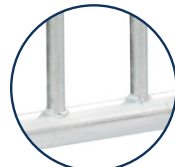
Male hooks inserted before welded to the frame and 30° bent to prevent disengage

IMPROVED STABILITY



Set-up and installation is quick and easy

EXTREME DURABILITY



16 gauge steel for maximum strength and hot dipped galv. for long-term weather resistance and durability

SPECIFICATIONS

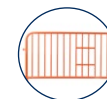
SKU	PB4290
Length	90"
Height	42"
Weight	55 lbs
Main Frame	1 5/8" OD 16-gauge tube
Grille	18 uprights of 3/4" OD 4" spacing
Feet	21" Flat T-Stand
Finish	Hot Dipped Galvanized

ACCESSORIES (OPTIONAL)



Barricade Cart

Easily move your barricades.



Custom Color Options

Customize the colors according to your needs.



Advertise & Monetize

Easily turn your barricade into a billboard, with covers and signage.



Barricade Gate

Provide access through a line of barricades and create rapid evacuation system.

BASE TYPES



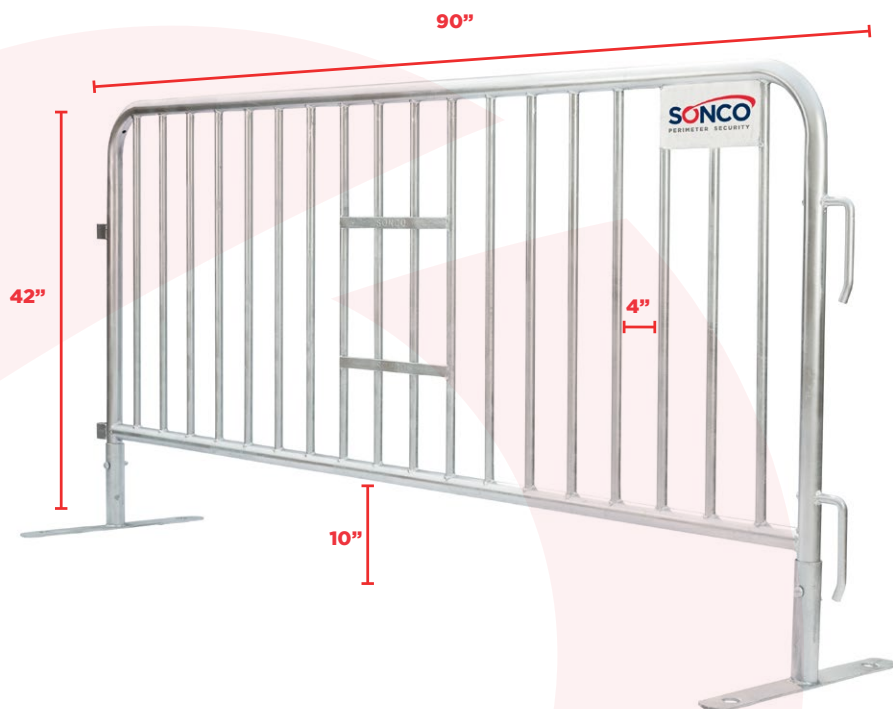
Bridge Base



Sliding Wheel Base



Wheel Stand



888-776-2615 | 888-776-2616
240-487-2489
sales@soncostore.com
www.soncostore.com

SONCO
PERIMETER SECURITY